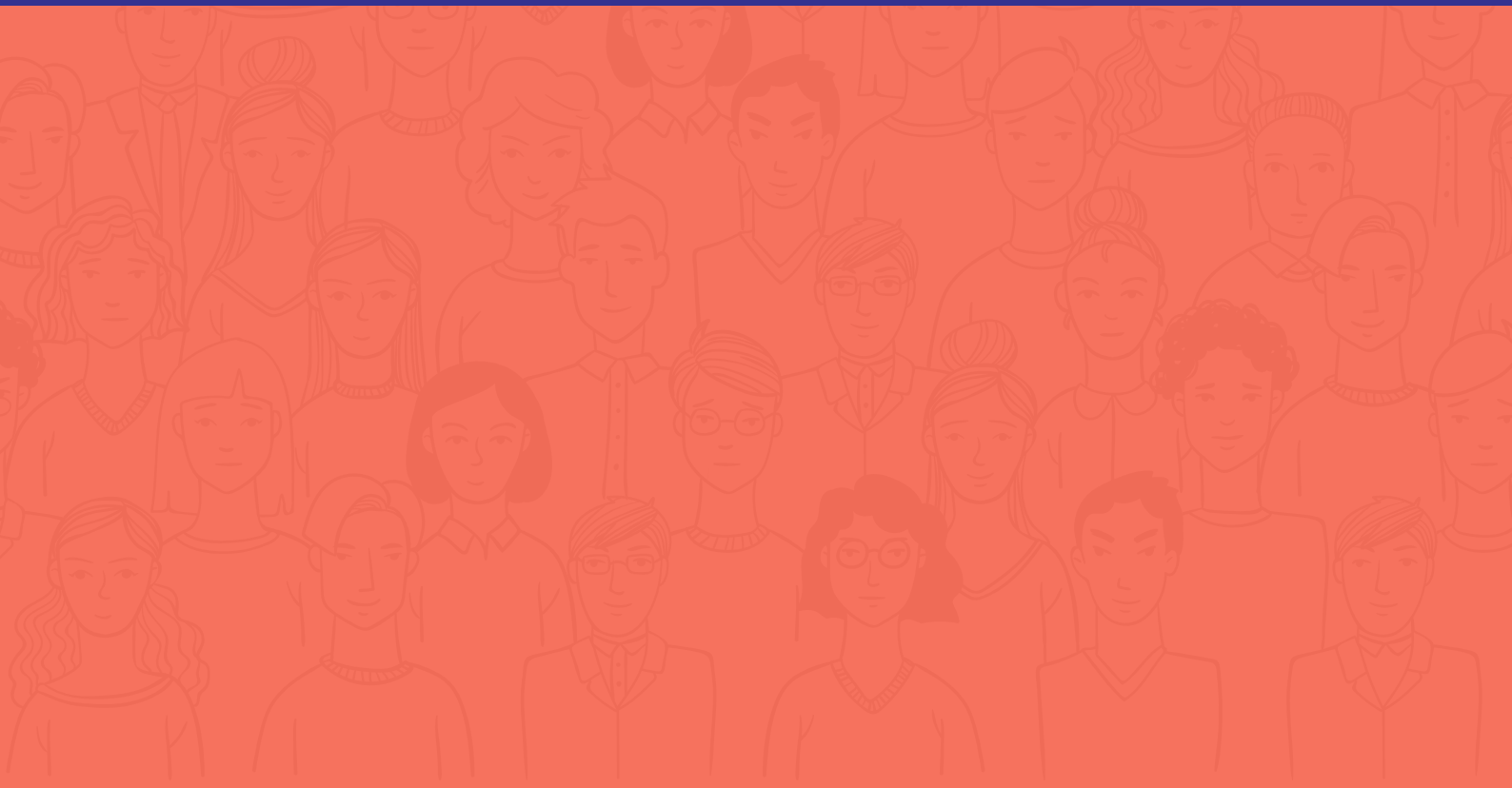
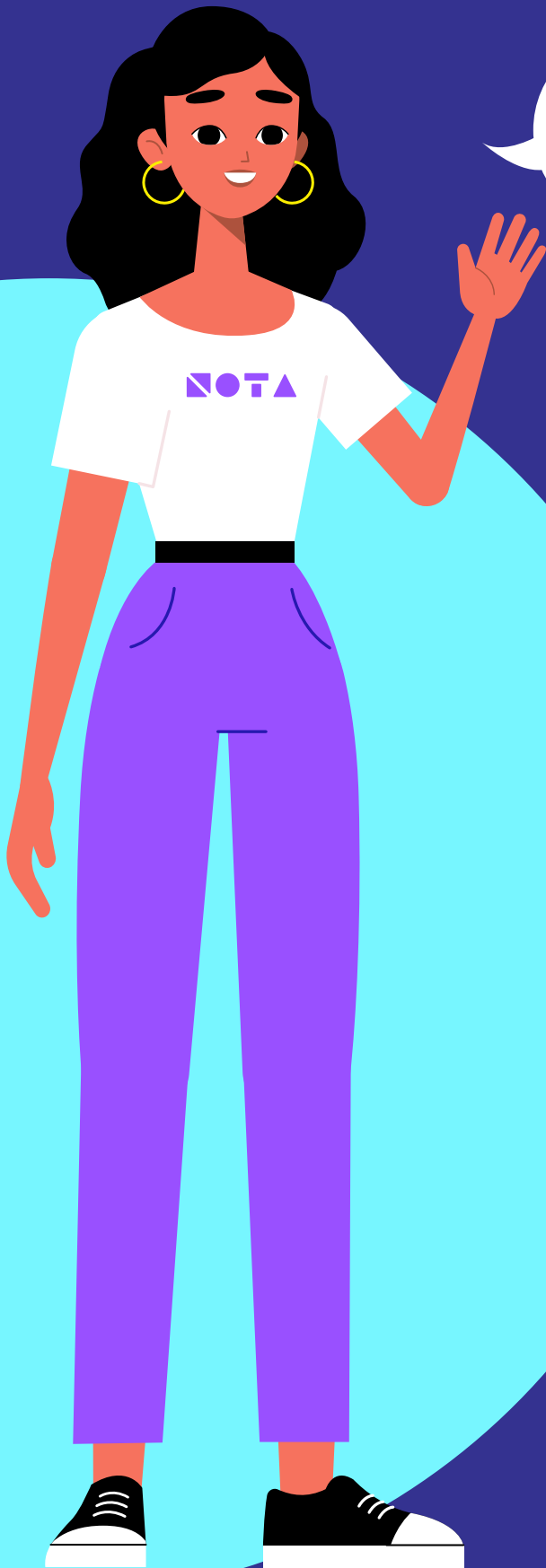




**Curated DE&I Leadership
hands-on training or
Company Wide Conference
(Digital or In Person)**



Meet Ingrid Harb...



Hi there!..

My name is Ingrid (She/Her) and **two years ago I founded NOTA Inclusion** with the mission to curate, design and produce DE&I experiences and conferences that unlocked belonging and Inclusion in the workplace..

The idea is to design an experience based program with the goal of introducing practicing concepts that bring awareness, resources, and tools to sustain a culture of belonging.

We will customize this program/conference to meet the needs of your leaders and employees, while also elevating their potential to lead inclusively.

Why is this important?

We live in an experience-driven economy where **people are choosing connections over possessions and letting their hearts drive loyalty.** This behavioral shift is forcing companies to rethink the way that they engage and nurture their employees.

We offer an opportunity for leaders to build self-awareness, and have access to customized training that can help identify what's working and what's not. Giving them a clear picture of what their role is to build a culture of inclusion.

How does it work?

Let me explain our methodology to you...



Impulse (Idea)

We start by defining what type of program your employees/leaders need because inclusion doesn't have a one size fits all (We customize all of our solutions). During this process we meet with your team to spark inspiration, ideas and concepts.



Intuition (Feel + Sense)

From the idea, we start to create different options of paths and themes you can take based on what we captured. Giving your team the option to choose what path will help you build and foster belonging, equity and inclusion. This phase is interactive, fun and intersectional, we make sure that all of your employees can feel themselves represented and heard.



Intellect (Thought)

We now further develop the concept, branding, speakers, strategy and finalize all of the logistics of the program. Our service includes complete execution, we produce and manage the tech (backend) of the event, we design all of the branding shown during the conference, we develop the assessments, any creative/animated work, the speaker sessions are customized to be interactive and we work on making the space for your employees/leaders to practice the concepts.



Aligned Action (Form)

We produce a results report, including the summary of the assessment, capturing comments, highlighting action items. But most importantly, this is not just a conference, look at it as the start to your DE&I journey. We lay the groundwork and foundation for inclusion to be activated within your culture, making this the start of a complete year long experience.



Beyond culture exist people,
and companies miss what
employees crave the most, a
place of belonging,
understanding, fulfillment and
accountability.

Ready to start?

Start your journey with NOTA
today!

notainclusion.com



NOTA INCLUSION